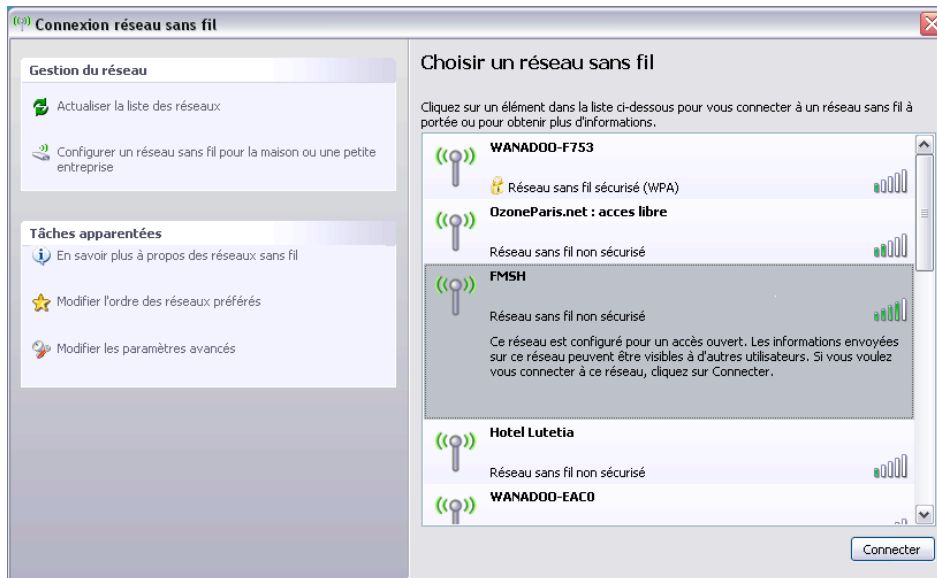


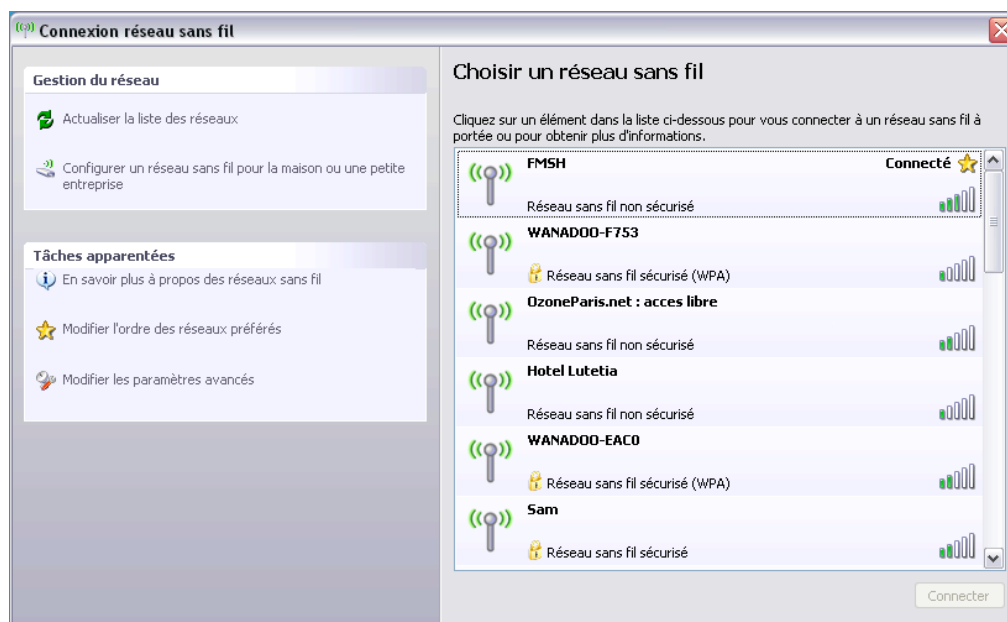
How to use WIFI MSH access to Internet

Doc for PC users with Windows XP, a wifi card or USB wifi key

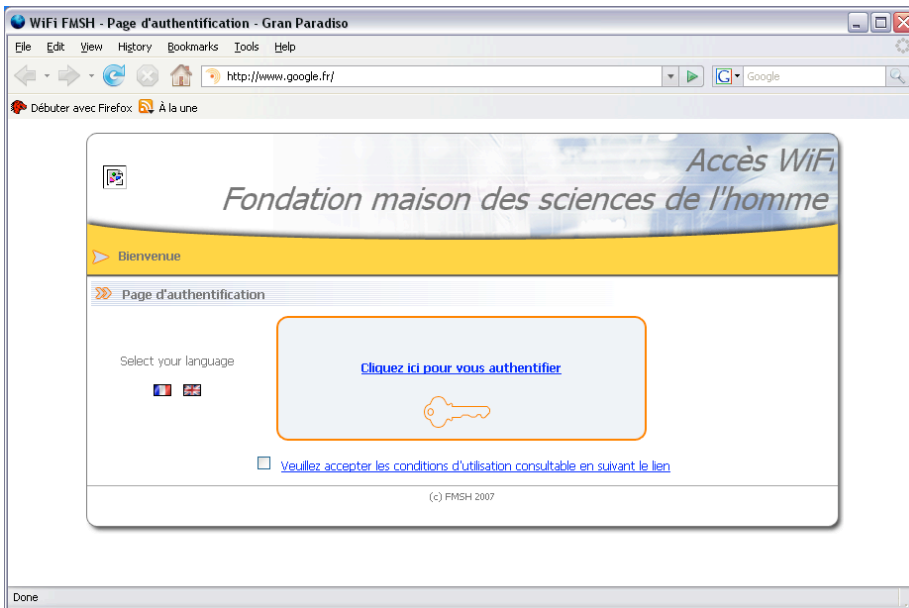
1) After booting, verify available network connections (**Start** menu, **Configuration panel**, **Network**, **Wifi Connections**). You obtain the following screen :



2) Among all the available wifi connections (in this district) select **FMSH**, click sur **Connect**.



3) You get a « connecté » signal next to **FMSH**. Start a browser (Firefox, Mozilla, Internet Explorer, etc.). The following screen appears :



4) Click on the key to identify yourself, you'll get another screen with a login and password requirement. Fill in your login and password (**utilisateur**=your login). You'll get the following screen



5) Now you're connected. Don't close this window, minimize it. To continue, open a new browser window or your mail application (Thunderbird or Outlook, etc.).